



*featured museum:*

# Vernon's Toy Shop

*A wonderful experience for people of all ages!*

SEE ARTICLE ON PAGES 10 & 11



**Winter  
2016  
Vol.34, No.2**

# NEWSLETTER

*A Publication of the Museum Association of Newfoundland & Labrador*



The 2015 AGM & Conference was held at the Ramada Hotel in St. John's! Read all about it on pages 6-7!

**Contributions from a  
Descendant: Casting a  
Face for The Rooms First  
World War Project**

**9**

**New Technology:  
Accepting Credit Cards  
in Your Museum**

**13**

**MANL Workshop  
Announcements**

**15**

## Board of Directors 2015 - 2016

### Executive Officers:

**President:** John Griffin, Member at Large (jgriffin@nlpl.ca)

**Vice President:** Teresa Greene, Red Indian Lake Heritage Society (greenezenith02@hotmail.com)

**Treasurer:** Teresita McCarthy, Bell Island Community Museum (teresita\_mccarthy@hotmail.com)

**Secretary:** Glenda Reid Bavis, Dr. Henry N. Payne Community Museum (reidbavis@bellaliant.net)

**Past President:** Teresita McCarthy, Bell Island Community Museum (teresita\_mccarthy@hotmail.com)

### Regional Directors:

**St. John's:** Carla Watson, Admiralty House Communications Museum (admiraltyhouse@mountpearl.ca)

**Avalon:** Beverley King, Wooden Boat Museum of NL (bkingheritage@gmail.com)

**Eastern:** Joan Kane, Trinity Historical Society (joan.kane@nf.sympatico.ca)

**Central:** Alexander Crawford, Town of Fogo Island (recreation@townoffogoisland.ca)

**Western:** Nadine Osmond, Southwest Coast Historical Society (nadine.osmond@gmail.com)

**Labrador:** Jamie Brake, Nunatsiavut Government (jamie\_brake@nunatsiavut.com)

### Staff:

**Executive Director:**  
Ken Flynn (kflynn@nf.aibn.com)

**Professional Development Coordinator/Preservation Advisor:**  
Danielle Rundquist (drundquist@nf.aibn.com)

**Professional Development Coordinator:**  
Sarah Wade (swade@nf.aibn.com)

**Museum Assistant:**  
Sarah Dwyer (manl@nf.aibn.com)

### Articles can be submitted to:

#### MUSEUM ASSOCIATION OF NEWFOUNDLAND & LABRADOR

P.O. Box 5785  
St. John's, NL  
A1C 5X3

PH: (709) 722-9034  
FX: (709) 722-9035  
E-mail: manl@nf.aibn.com  
Web: <http://www.manl.nf.ca>

Office Hours: Monday to Friday, 8:30am to 4:30pm  
(closed on provincial government holidays)

The deadline for article submissions is one month prior  
to the publication:

March 1st for No. 1 (April), June 1st for No. 2 (July), September 1st for  
No. 3(October), December 1st for No. 4 (January).

The Museum Association of Newfoundland & Labrador (MANL) is a nonprofit, charitable organization that seeks to promote the interests of community-based museums, groups, individuals and government organizations involved in the preservation and presentation of the province's cultural and natural heritage.

MANL gratefully acknowledges the financial support of the Government of Newfoundland and Labrador, and the Department of Canadian Heritage, Museums Assistance Program.

Registered Charity Number. 10775 6199 RR0001

## President's Report

It has been a busy fall at the MANL office. Our 35th Annual General Meeting and Conference was held the first weekend in October. Our theme Handcrafted Heritage was chosen in part to acknowledge the Canadian Craft Federation's celebration of 2015 as Craft Year. Our Opening Reception was held at Devon House, home of the Craft Council of Newfoundland and Labrador. I would like to thank Anne Manuel and her staff for hosting us, and to all our members who gave updates on the activities of their groups. On Saturday, there were several sessions that demonstrated how crafts can be part of museum programming and interpretation as well as help gift shop sales. I would like to welcome to the MANL board three new directors: Carla Watson (Regional Director St. John's) from the Admiralty House Communications Museum, Beverley King, (Regional Director Avalon) from the Wooden Boat Museum of Newfoundland and Labrador and Nadine Osmond, (Regional Director Western) from the Southwest Coast Historical Society. I would also like to thank Diane Curtis who served 4 years on our board, the last two as Secretary.

Training and education remain our central focus. To this end, we are able to offer 10 workshops across the province this fall and winter through funding provided by the Museums Assistance Program of the Department of Canadian Heritage. We were also successful in obtaining funding from the Department of Business, Tourism, Culture and Rural Development to continue assisting our members to meet the minimum standards required to meet eligibility requirements for the next round of CEDP funding. About 41 organizations now meet the minimum standard requirements of the program and many more are close. Overall, I believe this is a great indicator of the enthusiasm our members who volunteer their time and efforts have for the betterment of the museum community in Newfoundland and Labrador.

We have heard much in the news lately about the financial situation our province finds itself in. During the upcoming pre-budget consultations I encourage everyone to participate when the opportunity presents itself and remind our government, and the general public of the important work museums and heritage organizations do to protect, preserve and make available our history and culture today and for the future.

Here's looking to a successful 2016!

Regards,  
John Griffin

## Executive Director's Report

In this issue we are pleased to welcome our newest museum member, Vernon Reid from Vernon's Toy Shop. Mr. Reid's site boasts a multimillion dollar rear car collection that has been open to the public for a few years now. During the year I was able to visit different regions of the province meeting many of our members and touring museum facilities. It was exciting to see the great work being done on the Burin Peninsula and Fogo Island and offer assistance with their collections. I continue to be amazed by the efforts of our members and the volunteer hours given to preserve our culture and history.

Recent meetings in Ottawa discussed the future of the Museums Assistance Program. Our past President Teresita McCarthy attended these meetings and voiced MANL's concerns about the current program. Teresita also expressed our views concerning the need for support for other museological programs we offer to our museums. We received news that in February, a motion was introduced and passed in the House of Commons to undertake a major study of small and local museums in Canada. This study by the House of Commons Standing Committee on Canadian Heritage should include all non-government museums in the country. The committee will be calling museums as witnesses and plans to visit small museums in different regions of the country. This review is long overdue as most services cater to large institutions. These positive initiatives can be contributed to our work with the Provincial and Territorial museum associations and the Canadian Museum Association who works tirelessly on our museums behalf. Hopefully, the committee will visit Newfoundland and Labrador and we can express our concerns in person.

MANL's 2016 fiscal year has begun to wind down. We are busy with the completion of our training programs throughout the province. Please call the office if you want more information on these offerings. This March we will be moving to a new location from our current home at Hallett Crescent to an annex at the Roman Catholic Archdiocese alongside the Basilica. Details of the move have not yet been finalized so watch for the official announcement. Hopefully, this move will be our last for the awhile. I look forward to working with you in the coming year.

Regards,  
Ken Flynn

## Professional Development Report

MANL has had another successful Conference and AGM – hooray! In October 2015, MANL hosted our "Handcrafted Heritage" Conference and Annual General Meeting in St. John's. At the conference, we encouraged participants to expand their perception of craft and its long connection to museums—whether through exhibition, programming, gift shops or interpretation. We would like to extend a big thank you to Community Capacity Building Program for allowing us to offer the "Project Management" workshop. Also, we would like to sincerely thank the professionals that volunteered their time to share their insights and expertise in the heritage sector with our conference participants.

MANL has also been diligently working on offering our project for the 2015-2016 Museum Assistance Program. This project combines the main standards of exhibition research, care and handling, and display; inspiring museums to create exhibitions around the Road to 2017. This province played an especially crucial role in World War II and during the Battle of the Atlantic through the many military facilities established on the island of Newfoundland and also in Labrador. With this project MANL has offered "Introduction to Exhibit Development: Telling the story of Newfoundland in the first and Second World War, battles of the Somme and Beaumont-Hamel" in Cow Head, "Road to 2017: Our History in Pictures-The conservation, display, storage and copyright of photographs in collections" in Deer Lake and St. John's, and "Celebrating Canada's national flag: Preserving and displaying flags in your collection" in Cupids and Happy Valley—Goose Bay. All of the workshops offered were very well received. It is a pleasure to work with Canadian Heritage Museum Assistance Program. We are so grateful to have the opportunity to offer such a great variety of workshops that allows MANL to work with the membership to preserve and maintain museum collections as well as ensure collections are accessible to current and future generations.

The staff of MANL will be travelling to communities around the province to offer workshops in the next few months. If MANL is in your region, please take advantage of the chance to attend a workshop or stop by to touch base with staff and colleagues. We would love the opportunity to catch up and hear about what is happening at your museum!

Regards,  
Sarah Wade



**Them Days** is a non-for-profit archives and oral history magazine which started in 1975 and is located in Happy Valley-Goose Bay, Labrador. Them Days is dedicated to collecting, protecting and promoting the stories of Labrador. We publish a quarterly oral history magazine and maintain an archive containing Labrador-related materials.

Them Days launched a new project this winter called the Labrador Image Identification and Dissemination Initiative or **#IDThemDays** for short. This project is funded by Library and Archives Canada's Documentary Heritage Communities Program. **This main goal of the project is to research, sort, and identify 12000+ photos and negatives which have little to no information about them.** This includes field, archival and office work.

My name is Terra Barrett and I am a Folklore Masters student with Memorial University. I am the project researcher with the **#IDThemDays** project. I am digging through the archives, matching duplicated photos, scanning images, meeting with community members, and travelling across Labrador including Nain, Natuashish, and Cartwright. After the photos and negatives have been identified I enter the information into a database and will create a finding aid so researchers, public, and staff will be able to find the information and access the material.

I'm really enjoying the project and my time in Labrador. I have met a number of people through elders' socials, 50 plus club events, and teas held at the office. We are also engaging a wider audience through the use of social media such as Facebook, Twitter and Instagram. We post pictures from the project several times a week and use the hashtag **#IDThemDays** to track the engagement. If you would like to get involved call 709-896-8531.

#### Labrador Region



#### Western Region



The **Railway Heritage Museum**, in Channel-Port aux Basques, displays the Mushrow Astrolabes every year during the summer. This summer, during Come Home Year week, Wayne Mushrow gave a presentation on his discovery of the two astrolabes while on a recreational dive near Isle aux Mort's (12 km from Port aux Basques). The Museum was a packed house while Wayne recalled working as a milkman in Port aux Basques, learning how to scuba dive and finding the astrolabes in a shipwreck.

Both astrolabes are mariner astrolabes, which are used to determine the ship's latitude while at sea. Mushrow Astrolabe I dates to 1628 and is likely Portuguese in origin while Mushrow Astrolabe II is dated to 1617 and is believed to be French in origin. Some of the other items found include dishes, wooden bowls, a vase, and parts of a shoe with wooden pegs instead of nails. The ship (wreck) itself sank sometime after 1638 and although its identity is not known, based on the artifacts found it is thought to have been a French merchant or fishing vessel pointing to the early European migratory fishery in the province.

Wayne also spoke about the complications he experienced with the RCMP and the Newfoundland Government in trying to agree on the arrangements of keeping the astrolabes in Port aux Basques and giving him the recognition of the historical find.

The discovery of these astrolabes is a great piece of history and a significant find for our area. The Southwest Coast Historical Society ensures the story still gets told every summer as part of interpretative tours offered by our summer student guides.

Wayne's presentation can be viewed here: [www.mushrowastrolabe.net/](http://www.mushrowastrolabe.net/)

The highlight of 2015 for the **Grand Falls-Windsor Heritage Society** was the long awaited release of the consultant's report on the development of Grand Falls House as a heritage project. Grand Falls House—the Edwardian mock-Tudor residence of Lord Northcliffe—is a unique and under-appreciated gem in the crown of heritage buildings in this province. We hope that local input will soon bring to this wonderful house the world-wide attention it deserves. Several researchers used our collection of paper mill-related materials. Our photos were included in a book about the history of Scottish forestry and in a prestigious online international encyclopaedia on The Great War.

We secured funding for digitising the rest of the Hiram Silk collection of interviews known as "Looking Back". With the help of Dale Jarvis and the MUN tech team, we will soon have this entire collection online. Current projects include conserving the Albert Hillier collection of drawings and digitising an extensive private collection of historic negatives.

We now have a new website, an active Facebook page, and a growing coterie of dedicated volunteers and members. We are looking to expand our community outreach in 2016 as the Town of Grand Falls-Windsor celebrates its 25th anniversary.

Even as our mill enters the sad final phases of demolition, we are planning with a renewed sense of optimism for the future of heritage in our town.

Photo courtesy Bryan Marsh; historian. Bryan donated a canvas print of his original painting as our main 2015 fundraiser.

#### Central Region







### Eastern Region

#### Preserving Our Past in Stone

A long term goal of the **Hant's Harbour Willow Tree Heritage Society** came to completion on August 16, 2014, when a special plaque unveiling ceremony took place in the Willow Tree Heritage Cemetery (Old Methodist Cemetery), commemorating the seven lives lost in the wreck of the "Fanny" near Hant's Harbour in December of 1835.

Some one hundred people from around the province gathered at the cemetery for the ceremony. This event featured greetings from different groups and organizations, as well as prayers, a poem entitled "The Sad Saga of the Fanny", a very appropriate hymn "Will Your Anchor Hold?", and of course the highlight of the ceremony, the unveiling of the commemorative plaque. This special act was performed by Keith Pittman and Gerald Dawe, first cousins and descendants of William Kelso Jr., owner of the sloop "Fanny", and representing the Willow Tree Heritage Society; Secretary, Gertie Pelley. This was a very moving moment, especially for the cousins.

Engraved on the plaque, along with the name of the owner, William Kelso Jr. were the names of the Skipper; Ben Breddy, and crewmen; John Heyter, Jonathon Miller, John Sheppard, John Stevenson and James Swyers.

After the ceremony, the President of the Willow Tree Heritage Society, Carl Smith, extended an invitation to all those present to go to the United Church Memorial Hall for a social time of refreshments and entertainment. The crowd then headed to this nearby building. All those in attendance seemed quite interested in this historic event and it was evident that they enjoyed the afternoon.

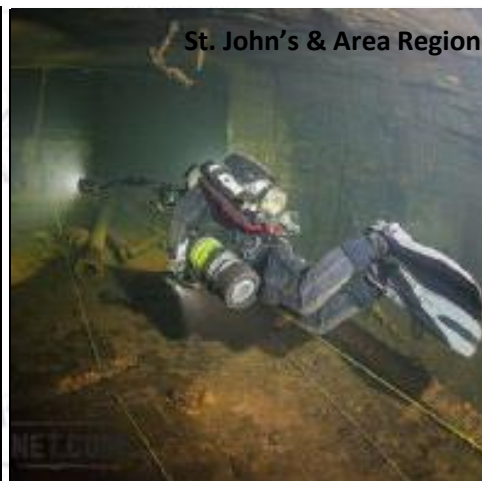
The **Placentia Area Historical Society** has had a good year. Finances remained satisfactory, but they are always a bit of a struggle as it is for many museums. For the past two years we have been fortunate to get good managers for the museum under a JCP program. This allows us to keep the museum open longer each year. We usually get three students approved for the summer and they have been outstanding.

Our main responsibility, the O'Reilly House, has been going well. This year we took in \$1,874 from admissions and donations, which is almost twice what we took in last year. We received some additional artefacts; the most significant have been two cannons now mounted in front of the museum. We have recently set up a room designated to the Basque who played an important role in our early history going back to the 1500's. In that room is a copy of a will that is believed to be the earliest original civil document written in Canada. This will, written in 1563, for a Basque sailor mentions Placentia in it as the place he wishes to be buried.

Our Annual Tea Party on the museum grounds was a great success. This year we presented Heritage Awards to a former mayor, William Hogan, as well as a historian in the Basque country of Spain who comes from the town Plentzia, which Placentia was named after. He has been most helpful to us in learning about the Basque and telling his people about our town.

We are excited to be teaming up with Atlantic Charter Foundation in Ship Harbour and a national group to celebrate the 75th Anniversary of that event in 2016. Stay tuned!

#### Avalon Region



### St. John's & Area Region

An environmental physiologist based in North Carolina has been part of a team conducting a series of dives in the Bell Island mines.

The diving project, involving one of the top divers and underwater photographers in the world, Jill Heinerth, has just wrapped up.

While Heinerth's efforts were concentrated on collecting information on some of the artefacts still lying in the flooded mine shafts, Dr. Neal Pollack's work is to document the effects of diving on the body. He says Steve Lewis brought him into the mix, and he was happy to participate.

Dr. Pollack says because it's very difficult to collect the information he needs in the lab, diving in a mine provides some excellent data for his purposes. He says because they all must come up the same mine shaft at a slow ascent, it can provide the consistency he needs.

Meanwhile, Jill Heinerth says she's already collected some wonderful images, most of which are available online.

She says some of the equipment is huge, and they even found graffiti on the mine walls - everything from caricatures of fellow miners to memorials to those who lost their lives in the mines.

Pictures can be found at [www.bellislandmines.com](http://www.bellislandmines.com) or at Jill Heinerth's webpage: [www.intotheplanet.com](http://www.intotheplanet.com)

# Handcrafted Heritage

*Submitted by: Sarah Dwyer, Museum Assistant. Photo Credit: Desmond McCarthy.*

MANL's 2015 AGM and Conference was quite the success this past October in St. John's with over 50 museum professionals who came from near and far to attend this important event, which focused on craft and its relation to museums, whether through the gift shop, interpreting craft for programming or forming partnerships with craftspeople. We are thankful for all of the great presenters that were able to join us who provided valuable information for delegates to take with them and share with others. Below are the highlights from the conference.

## Pre-Conference Workshops

There were two pre-conference workshop opportunities available to participants. The first was Project Management, this session was designed to provide volunteers and staff of not-for-profit agencies, municipal governments, community groups, and others with a working knowledge of project management. It brought forward the skills needed in relation to managing projects, constraints to consider when developing a project, and the five main stages of the project life-cycle. The content included useful tools, sample processes, exercise, case studies, management plans and project planning tips.

The second pre-conference workshop option was Our History in Pictures: Making Your Photographs Accessible to the Wider World, presented by Mary Ellen Wright (ANLA). This workshop assisted participants in organizing photographic collections. After a brief review of proper storage and handling procedures Mary Ellen worked through the processes that allow a museum to provide access to and information about access issues, including finding aids, databases and digitization. The workshop finished by exploring some of the copyright issues that heritage groups should be aware of when sharing their photograph collections with the public.

## Reception

On Friday night, before the conference on Saturday, we held our reception at the Craft Council of Newfoundland and Labrador's Devon House Craft Centre where numerous unique art items were on display for view. There was food and refreshments along with live entertainment wonderfully performed by Tony O'Brien and Mike Mutrey. They played an array of Newfoundland music and set a pleasant mood before our President John Griffin welcomed participants and then carried on with members updates. Members had much news over the last year to relay; between successes, setbacks and upcoming events, there were many diverse topics covered that everyone enjoyed. It was a well enjoyed evening at the Craft Council, who amazed everyone with their art collection.



**Continued...**

## **Conference Sessions**

Throughout Saturday, we had a variety of presenters focusing on crafts and how important it is for museums to help connect people to our natural and cultural heritage.

We were excited to have Lucy Alway from the Department of Business, Tourism, Culture & Rural Development join us to give an update on the Cultural Economic Development Program and congratulated the groups that are now compliant with minimum standards. To find out more information on CEDP Minimum Standards, please read the article "Minimum Standards" on page 12. Lucy also talked about funding sources in an afternoon session.

In one of the afternoon sessions called "Craft in the eye of the Craft's Person" Susan Lee Stephen and Susan Furneaux spoke on how to engage other craftspeople, the importance of communicating to the public, marketing merchandise, and building potential for making new partners. "Craft in the Eye of the Buyer", presented by Cynthia Randell and Kelly Jones, was directed towards the demand of the public and how to adapt to their needs in the crafting world.

Another intriguing session called "Crafting Partnerships", presented by Janet Costigan from the Department of Business, Tourism, Culture and Rural Development explains how communication is essential for growth in this industry, and how they can help people achieve their partnership goals through communicating properly.

Edith Samson and Joan Kane talked about their involvement with the Cultural Crafts. Cultural Craft is a partnership between local groups that work together to provide signature craft products at tourist sites on the Bonavista Peninsula. Kane and Samson also provided conference participants with a review of how they got started with the project, the process they went through while in the development stages and a sneak peek into the future of Cultural Crafts. To find out more about this project, you can visit: <http://www.culturalcraft.com/>

The day was filled with fun activities, such as a Craft Circle where participants were welcomed to bring any craft projects they were working on and share them with the group. Joan Kane and Sarah Wade as you can see on the front cover brought their knitting needles with them and they had a yarn! We had a wonderful silent auction selection, from local goods, crafts and prints to gift cards from local shops and restaurants. To end off the day we drew a name for 50/50 tickets that were collected over the past months and announced the lucky winner.

## **Annual General Meeting**

After an enlightening morning, everyone settled in for the AGM luncheon and awards. Annual Reports were distributed to the delegates. If you would like to read more about these reports, please contact the office and we will send you a copy. Elections to the Board of Directors also took place during the AGM. Stepping into new positions: Beverly King, Avalon Regional Director; Carla Watson, St. John's Regional Director; Glenda Reid Bavis, Secretary; Nadine Osmond, Western Regional Director; Teresita McCarthy, Treasurer. Diane Curtis stepped down from position of Secretary. MANL sends a BIG thanks to Diane for all of her dedication over the years. For a full list of Board Members and their contact information, please visit [www.manl.nf.ca](http://www.manl.nf.ca).

## **Many Thanks**

Thank you to everyone for your support and contributions to our Association. MANL would like to thank our sponsors: Bell Island Heritage Society, Grenfell Historical Properties, Heritage Foundation of Newfoundland and Labrador, Smallwood Interpretation Centre, Wooden Boat Museum, Trinity Historical Society, Johnson Geo Centre and Provincial Historic Sites. We were overwhelmed with the generosity of these groups. And we would like to send out a big heartfelt thank you to the presenters for taking time out of their busy schedules to pass along their knowledge to museum professionals from across the country. To get a glimpse of the AGM and past MANL events please visit: [www.flickr.com/photos/manl/](http://www.flickr.com/photos/manl/).



# Thank you to our major sponsor!



## PROVINCIAL HISTORIC SITES



*Volunteer with the Recruiting Party  
on the Grounds of Commissariat House!*

**St. John's, Avalon Region**

### **NEW WORKSHOP: "Common First and Second World War Artifacts: Conservation, Cleaning, Storage and Display of Military Metals and Weapons Relating to the Battles of the Somme and Beaumont-Hamel"**

**March 14, 2016; 9:00 a.m. - 4:30 p.m.**  
**The Grand Falls Windsor Heritage Centre at 7 High  
Street, Grand Falls-Windsor, NL**

**AND**

**March 16, 2016; 9:00 a.m. - 4:30 p.m.**  
**Corner Brook Museum and  
Archives at 2 West Street, Corner Brook, NL**



In this workshop, we will provide participants with the knowledge and skills to provide the proper preventive conservation to their military metals and weapons in their collection while they place these items on display or in storage, in order to ensure their long term stability. We will also discuss the skills to perform basic care and handling of these artifacts in preparation for display and to ensure their longevity. We will also pay particular attention to the legal guidelines and restrictions that are in place in regards to the storage, display, and ownership of firearms and other military weapons.

**Instructor: Kellie McIvor, McIvor Conservation**

**Registration fees: \$85 for MANL members, \$110 for non-members**

Cancellations received less than 5 days in advance are not eligible for refunds. Participants who do not attend remain responsible for full payment.

Thank you to the Canadian Heritage Museum Assistance Program and the Government of Newfoundland and Labrador's Cultural Economic Development Program.



# Contributions from a Descendant: Casting a Face for The Rooms First World War Project

*Submitted by: Angela Noseworthy. Photo Credit: The Rooms*



Here at The Rooms we are busy getting ready for the opening of a permanent exhibit on July 1st, 2016—Beaumont-Hamel and the Trail of the Caribou: Newfoundlanders and Labradorians at War and at Home 1914–1949. One major project is to represent the face of a soldier who fought in battle 100 years ago. This face, haunting and lifelike, will be mounted to a mannequin posed as if advancing into fire and facing a German machine gun in the Beaumont-Hamel section of our exhibition.

To find the right person, we placed an advertisement seeking a descendant of the same age his ancestor would have been at Beaumont-Hamel. There were many interested applicants, but we narrowed down our choices based on age and likeness to their ancestor. We offered the opportunity to Joshua Lehr, whose Great Grandfather—Aiden Joseph Hogan—fought at Beaumont-Hamel at the age of 21. He suffered shrapnel wounds to both legs, and a gunshot wound to his right thigh that fractured his femur. His leg was amputated in 1920.

We met with Josh to demonstrate the process of the mold-making. We all wanted to be sure he could last with his head covered in a skin-safe alginate as the plaster mother-mold was applied and dried, possibly taking up to 45 minutes. It is a very claustrophobic experience. His courage prevailed and we set a date for the casting session. The day started by taking pictures of his face. We asked him to hold a grimace, imagining what it might be like to walk into battle. Our staff will use these photos to do some refinement (sculpting) and painting of the cast later on. To get him used to the feel of the process, we began by taking a mold of his hands (holding a rifle shape) to be mounted along with the mannequin. Then it was time to do his face. We put a straw in his mouth so he could breathe, and with a team of four working at once, the alginate went on very quickly. It is the same material dentists use to make casts of teeth. To begin, the powder is mixed with water. At first, it had a very gloopy consistency, which allowed our staff to apply it into all crevices. After 3-4 minutes it started to solidify and work had to stop. Once it was fully dried, wet plaster bandages were applied, creating the mold itself.

We communicated with Josh using hand signals. He mainly used thumbs up to say he was doing ok, though it must have been an uncomfortable experience. The mold was able to come off after half an hour. Looking a little worse for wear, we sent Josh for a shower while our staff poured wax into the mold, creating the first version of the cast. There's still much more work to be done: Refinement of the cast, another mold and then another cast made of resin, eyes, hair, colour and mounting. All, we hope, to give our visitors a real appreciation of the men who went over the top on July 1st, 1916.

# FEATURED MUSEUM: Vernon's Toy Shop

*A wonderful experience for people of all ages!*

*Submitted by: Vernon Smith. Photo credit: Vernon Smith.*



Vernon's Antique Car Museum is located in scenic Swift Current, NL, 25 Kilometers from the Trans-Canada Highway on Route 210—the main road to Burin Peninsula. Nestled between rolling hills and situated in the head waters of Placentia Bay lies the quaint, secluded village of approximately 300 residents. A 23,000 square foot showroom containing what many consider to be the best private collection of vintage automobiles in all of Canada, and comparable to any facility of its kind in North America. The facility is not exactly outport typical, however, to many automobile and non-automobile enthusiasts it has been a jaw dropping and almost surreal experience.

With a passion for low and rare production automobiles, the first acquisition was a 1967 Plymouth Belvedere. It was a very basic automobile with no frills, but the intense passion to compile the rarest and most limited production model of the Blue Oval (Ford, Mercury and Mercury models), began to intensify. My long term goals were to acquire and restore them to better than new condition and at the same time adhere to the strictest standard of Authenticity. The hobby remained stagnant until 1995, but during the past 20 years the collection has surpassed expectations and consists of 64 low production antique automobiles from 1908 - 1970. The collection is diverse with the big three—GM, Ford, Chrysler, and the Brass era are well represented, with the majority of the cars being convertibles. In Addition is a broad display of exclusive muscle cars from 1967 through 1970, which many enthusiasts argue is the pinnacle of the exquisite muscle car era. There are several special vehicles; the first fuel injection vehicle and official pace cars.



Continued...

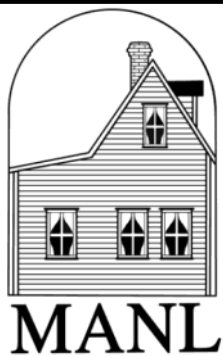


Walking through the custom made show room will take you back in time and one can envision more than a century of automotive history. On both sides of the two lane highway with lane markings representing route 66, are gleaming grills and shiny lights of vintage automobiles of every size and shape. The cars are neatly displayed with sufficient walking space that all cars can be viewed from any angle. Each vehicle is in running condition, and can be fired up in a moment's notice. In addition to cars there are century old gas pumps, an original 1946 Wurlitzer Juke Box, pristine Coco Cola Signs and exquisite memorabilia of garage and road side diners of the 1950's.

Contributions from proceeds are distributed among the community school, fire hall and other community organizations. The facility has become a favorite location for the annual high school graduation, family photographs, we also chauffer local high schools grads on prom day.

The museum is open each day from April to the end of November

**Hours:** Monday – Saturday 10:00 a.m. – 6:00 p.m. | Sundays 1:00 p.m. – 6:00 p.m.



Museum Association  
of  
Newfoundland  
& Labrador

Certificate in  
Museum  
Studies

**Focus Areas:**

**Museum Governance, Collections Management,  
Preventive Conservation and Exhibit Design**

This program is designed to provides museum workers with a general introduction into current theories, standards, and best practices for museums.

**For more information contact our  
Professional Development Coordinator  
Sarah Wade**

**Tel: (709) 722-9034**

**E-mail: drundquist@nf.aibn.com**



- Display Cases
- Environmental Monitoring
- Microform Cabinets
- Polyester Enclosures
- Dress and Suit Forms
- Textile Storage
- Document Storage
- ... and much more!

Call Today For Your  
Free Archival 2014 Catalogue!  
or Visit Us Online at  
[www.carrmclean.ca](http://www.carrmclean.ca)



Call 1.800.268.2123 • Fax 1.800.871.2397 • Shop Online: [www.carrmclean.ca](http://www.carrmclean.ca)

## Cultural Economic Development Program Heritage Operational Support – Minimum Standards Update

*Submitted by: Lucy Alway for the CEDP Heritage Advisory committee*

As many of you will know, in 2013 the CEDP Heritage Advisory committee announced the introduction of three minimum standards as eligibility requirements for CEDP Heritage Operational Support in 2016. These standards are important to all heritage organizations as they define what you do, how you will look after your collections and how you will meet visitor expectations. The minimum standards are:

1. Mission Statement
2. Compliance with the Tourism Assurance Plan
3. Collections Management Policy and procedures

Since 2013 MANL, along with the Association of Newfoundland and Labrador Archives, has been providing training, resource material and expertise to organizations across the province to assist them in meeting these standards. Through their considerable efforts many organizations have received the knowledge and guidance to develop their own policy and procedures, and there are many groups that are actively working with MANL to develop these standards.

The deadline for Operational support is **April 1, 2016**, and applications and final report forms will be mailed and available on our website. We request that organizations submit their application information even if they are still working toward compliance. We are aware that numerous groups are very close to meeting the minimum standards. For those that still have some way to go, there is still time and MANL has the resources to help.

On behalf of the advisory committee, I commend the board members, volunteers and staff of the following organizations for all their efforts in meeting the standards:

Organizations that meet the CEDP Minimum Standards as of January 12, 2016	
50 Centuries' Cultures Society	Glovertown Museum Association
Admiralty House Communications Museum	Grand Falls-Windsor Heritage Society
Agricultural History Society of NL	Greenspond Historical Society
Archives of the R.C. Archdiocese	Heritage New Perlican
Baccalieu Trail Heritage Corporation	Landfall Trust
Bay de Verde Heritage Committee	Matthew Legacy
Bell Island Heritage Society	Marystown Heritage Museum Corporation
Bonavista Historic Townscape Foundation	Municipality of Spaniard's Bay Heritage Society
Botwood Heritage Society	Newfoundland Pony Society
Brigus Historical and Conservation Society	North Atlantic Aviation Museum
Burin Heritage Tourism Association	Norris Arm Heritage Society
Burnside Heritage Foundation	Over the Top Museum
Cape Random Trust	Placentia Area Historical Society
Carbonear Heritage Society	Presentation Congregation Archives
Colony of Avalon	Railway Coastal Museum
Cow Head Conservation & Heritage Committee	Red Indian Lake Heritage Society
Corner Brook Museum and Archives	Signal Hill Tattoo Historical Animation Program
Cupids Legacy	Sir William Ford Coaker Heritage Foundation
Ferryland Historical Society	Them Days
French Rooms Cultural Centre	Tourism Elliston
French Shore Historical Society	Trinity Historical Society
	Wooden Boat Museum of NL

If you need further information on the minimum standards, please contact me at (709) 729-1409 or email: [lucyalway@gov.nl.ca](mailto:lucyalway@gov.nl.ca)



# New Technology:

## Accepting Credit Cards in Your Museum



The Tourism Assurance Program (TAP) is a program that was implemented May 31, 2014. This program has 5 criteria that members must meet in order to participate in the provincial tourism marketing campaign. One of the criteria for the program states that participants must have “The ability to communicate and receive messages from customers by telephone, email and an online presence and respond to inquiries on a daily basis.”

The square reader was introduced to Canada in October of 2012. It is currently available in Canada, United States and Japan. The Square reader is a device that connects to iPhone, Android, or iPad technology that has an active internet connection. The square reader allows subscribers to swipe credit cards on these devices and have the fees transferred into their bank account. The great feature of the square is that the fees to use the reader are based on a per swipe basis. A fee of 2.75% is charge per transaction. For example for a \$100.00 purchase, \$97.25 will be deposited into your bank account. For a manually entered transaction the fee is 3.5% plus \$0.15 per transaction. As well, there are no sign up fees, no monthly fees, or commitments.

In Canada, this technology does not take debit transaction but can be used for all major credit cards. The square reader seems to be relatively safe as the readers do not store any specific account holder or bank account information, nor do they need to be activated. The square register app is a free download and offers several features such as: digital receipts, and transaction history.

It is MANL’s goal to help our members reach the standards required to meet TAP requirements. We are not trying to promote the square technology but to offer information to our membership. Our research shows that the square reader may be a viable option for many of our members. However, we are eager to hear from sites that are currently utilizing the square reader. If you are using the square reader please contact our office and let us know about the benefits and any challenges you are experiencing. Please feel free to contact the MANL office at [manl@nf.aibn.com](mailto:manl@nf.aibn.com). For further information about the square reader go to: <https://squareup.com/ca>.

- 2.75% per swipe
- No sign up fees, no monthly fees, no commitments
- Accepts Visa, Mastercard, American Express and Discover. Debit or interact cards are not currently accepted via square in Canada.
- Into bank account in one to two business days
- Must have an active internet connection. (Must be Wi-Fi or a data service, such as 3G, 4G, or EDGE.
- When using a phone, incoming calls or text messages can interrupt payment processing.
- Should have at least \$1.00 in your bank account during verification process.
- Can only have one bank account linked to your square account.

Readers do not store any specific account holder or bank account information, nor do they need to be activated. Can issue refunds within 60 days. The full purchase amount will be returned to customers and Square will cover the fees.

### WHAT’S HAPPENING AT YOUR MUSEUM?

Contact MANL with the details of your upcoming events!  
Call (709) 722-9034 or E-mail: [manl@nf.aibn.com](mailto:manl@nf.aibn.com)

# MANL Workshop – Preserving and Displaying Textiles

*Blog Written for Them Days by Terra Barrett*



Aimee and I had the opportunity to get out of the office and participate in a workshop held at the College of the North Atlantic on Thursday February 18, 2016. The workshop was presented by the Museum Association of Newfoundland and Labrador (MANL) and was focused on preserving and displaying textiles in museum and archival collections. MANL is a provincial non-profit organization which offers advice, support and workshops on conservation, preservation, interpretation and exhibition.

The workshop was focused on flags so in the morning we discussed the importance of flags and the significance of their meaning. We also looked at the fibers textiles are made of and how to determine the fibers found in your textile and the methods of deterioration. We moved on to discuss how to store textiles and the proper temperatures, humidity and lights to use when displaying your textiles. In the afternoon we learned about rolled and flat storage for textiles and the pros and cons of each. We even played a game where we had to determine how well different museums were caring for the textiles in their collections.

We also got some hands on experience in rolling textiles for storage and in how to apply labels to the textiles. We learned about the proper materials to use and how to sew a label onto a textile without damaging the artifact. It was an excellent workshop and a great way to learn about museum and archival processes. Them Days has some textiles in our collection and we'll certainly be well prepared to handle, store, and display any more textiles which are donated to our collection.

Check out *Today at Them Days* for more exciting blogs! <https://themdays.wordpress.com/>



## Interested in Advertising in the MANL Newsletter?

Rates as low as \$20.00/issue. Contact MANL at (709)-722-9034 or visit us at [www.manl.nf.ca](http://www.manl.nf.ca)



# Workshop Announcements

*Submitted by Sarah Wade, Professional Development Coordinator*

## RESEARCHING METHODS FOR WAR COLLECTIONS IN PREPARATION FOR EXHIBITION

**March 17, 2016; 9:00 a.m.—4:30 p.m.**  
**44 Trans Canada Highway, Deer Lake, NL**

**AND**

**March 22, 2016; 9:00 a.m.—4:30 p.m.**  
**15 Hallett Crescent, Suite 201, St. John's, NL**

During this workshop participants will learn many of the steps required in order to effectively research their war collections in preparation for exhibition. Participants will learn: what resources to utilize, evaluating the strengths and weakness of various sources, organizing your information, and how to evaluate your information. This workshop will also teach participants how to sift through the information that has been gathered, produce an exhibition, and steps to avoid plagiarism and to follow copyright laws and guidelines.

Instructor: Sarah Wade, Professional Development Coordinator  
 Registration fees: \$85 for MANL members, \$110 for non-member

This workshop is an elective course for the new Museum Studies Certificate Program. For more information about this program please contact Sarah Wade, Professional Development Coordinator via email at [swade@nf.aibn.com](mailto:swade@nf.aibn.com) or at (709) 722 9034.

Cancellations received less than 5 days in advance are not eligible for refunds. Participants who do not attend remain responsible for full payment.

Thank you to the Canadian Heritage Museum Assistance Program and the Government of Newfoundland and Labrador's Cultural Economic Development Program.

## ONLINE WEBINAR: LEARNING THE LANGUAGE OF FUNDING APPLICATIONS.

**March 23, 2016; 12:00 p.m.—1:00 p.m.**

**Location: Online Webinar that will be offered through Hospitality NL**

Whether it's for a business or for a not for profit organization, writing a grant proposal and understanding the "language" of grant writing is a skill that you can learn. This workshop will take participants through some of the universal requirements and common terms found in application forms, with the goal of helping participants' complete strong and successful grant applications.

Instructor: Ken Flynn, Executive Director of the Museum Association of Newfoundland and Labrador.  
 Registration fee: \$15.00

Thank you to the Canadian Heritage Museum Assistance Program and the Government of Newfoundland and Labrador's Cultural Economic Development Program.

## Members Only Login

Have you logged in to the Members Only section of MANL's website yet? There's lots of tool kits on exhibits, collection management, conservation, human resources and much more! If you are a member and would like to access this information, please contact Sarah by phone (709) 722-9034 or by email [manl@nf.aibn.com](mailto:manl@nf.aibn.com). Please note that the login information can only be created in the MANL Office. Once you have been provided with your username and password it can be shared with fellow members of your museum (staff, volunteers and board members) to access online content.

## MAKE A DONATION

We are a Registered Charitable Organization whose mandate is to support and promote its members through training, communication, advocacy, and standards of excellence.

Cheques can be made payable to:  
**Museum Association of Newfoundland & Labrador**  
P.O. Box 5785, St. John's, NL A1C 5X3

### DONATION FORM

Name: \_\_\_\_\_

Address: \_\_\_\_\_

Province: \_\_\_\_\_ Postal Code: \_\_\_\_\_

Please accept my donation of: \$ \_\_\_\_\_ Cheque Enclosed: ☐

### MANL Membership Form

Is this a New Membership? \_\_\_\_\_

Is this a Membership Renewal? \_\_\_\_\_

Please ensure that we have your YEAR-ROUND contact information!

Please provide the following information:

Name: \_\_\_\_\_

Position: \_\_\_\_\_

Organization: \_\_\_\_\_

Governing Authority: \_\_\_\_\_

Address: \_\_\_\_\_

City/Town \_\_\_\_\_ Postal Code: \_\_\_\_\_

Telephone: \_\_\_\_\_ Fax: \_\_\_\_\_

E-mail: \_\_\_\_\_

*Your e-mail is being collected and used STRICTLY for MANL communication with its members*

I would prefer to receive my MANL NEWSLETTER:

In Print by mail

In PDF by e-mail

\* All members will continue to receive newsletters in print until further advised

#### Type of Annual Membership:

\_\_\_\_\_ \$25.00 Individual Membership (Voting)

\_\_\_\_\_ \$40.00 Institutional Membership (Voting)

#### Method of Payment:

\_\_\_\_\_ Cheque (Payable To: Museum Association of Newfoundland and Labrador)

\_\_\_\_\_ Cash

Total Payment Enclosed \$ \_\_\_\_\_

## DOUBLE DOWN!

### Make a Donation to MANL!

As a registered charitable organization,  
match your membership fee as a donation!

\_\_\_\_\_ Yes, I would like to make a donation  
(Tax Receipt Available)

\_\_\_\_\_ \$25.00

\_\_\_\_\_ \$40.00

\_\_\_\_\_ \$ \_\_\_\_\_ (other desired amount)

(Registered Charitable #10775 6199 RR0001)

### Forward your completed form with your payment to:

Museum Association of Newfoundland and Labrador

PO Box 5785 • St. John's, NL • A1C 5X3

Fax: 709-722-9035 E-mail: manl@nf.aibn.com



# MANL

## PROFESSIONAL DEVELOPMENT COURSES

**"Common First and Second World War  
Artifacts: Conservation, cleaning, storage  
and display of military metals and  
weapons relating to the Battles of the  
Somme and Beaumont-Hamel"**

Monday, March 14, 2016

9:00 a.m. - 4:30 p.m.

Location: The Grand Falls Windsor  
Heritage Centre at 7 High Street.  
Grand Falls-Windsor, NL

**AND**

Wednesday, March 16, 2016

9:00 a.m. - 4:30 p.m.

Location: Corner Brook Museum and  
Archives at 2 West Street.  
Corner Brook, NL

**"Researching Methods for War  
Collections in Preparation for Exhibition"**

Thursday, March 17, 2016

9:00 a.m. - 4:30 p.m.

Location: 44 Trans Canada Highway,  
Suite 2, Deer Lake, NL

**AND**

Tuesday, March 22, 2016

9:00 a.m. - 4:30 p.m.

Location: MANL Office: 15 Hallett  
Crescent, Suite 201, St. John's, NL

**Sign up to receive our Listserv!  
Email [manl@nf.aibn.com](mailto:manl@nf.aibn.com)  
or call 709-722-9034**